

# Panakeia

For charter in the Med from May to September & Asia from December to April.



# PANAKEIA

**Length:** 45.50 metres (149' 3")

**Beam:** 8.60 metres (28' 3")

**Draft:** 2.3 metres (7' 7")

**Number of Guests:** 10

**Number of Crew:** 10

**Built:** 2008

**Builder:** Astondoa

**Naval Architect:** Astondoa

**Hull Material:** Steel

**Hull Configuration:** Displacement

**Superstructure:** Tri-deck +

Air conditioning, Stabilizers, Elevator (access to lower, main and upper deck), Sun Deck Jacuzzi, World-wide Starlink powered Wi-Fi throughout the yacht.

---

PANAKEIA was the Greek goddess of universal remedy, and a charter aboard this 45.5m superyacht delivers top-level relaxation and hospitality.

Built by the Astondoa shipyard and featuring an interior by Cristiano Gatto, PANAKEIA is a luxury motor yacht with large interior spaces, expansive decks, and she carries an extensive selection of water toys.

Highlights of the design include a sun deck with Jacuzzi and statement bar counter, a beach club lounge with huge sofa within the transom, and a sizable bathing platform for easy access to and from the water. For those who like to stay connected, PANAKEIA is equipped with 2 Starlink internet connections for the best World-wide Wi-Fi performance.

Meals can be enjoyed al fresco to aft on the main deck, within the saloon, or at the formal dining table on the bridge deck, which resides within an innovative circular space with glass doors connecting it to both the interior and exterior.

There's accommodation for 10 guests in five spacious cabins, comprising four doubles and one twin. The full-beam master suite benefits from an owner's study, walk-in wardrobe, and full en suite with statement bathtub. Each cabin is finished to very high standards.

The main saloon is split into three distinct areas with space to dine, lounge seating, and a bar counter for drinks and cocktails.

# Key Features

- 1** Large interior spaces and expansive decks
- 2** Elevator to access Lower Deck, Main Deck and Upper Deck.
- 3** Great selection of water toys including 3 E-foils, 4 sea scooters, a Freefall climbing wall and much more.
- 4** Experienced crew of 10
- 5** Sun deck with Jacuzzi
- 6** Multiple interior and exterior dining options
- 7** Family friendly setup
- 8** Warm and expert hospitality





Swimming platform









Main deck aft



Main deck aft





Swimming platform and toys



Swimming platform



Main deck salon - dining



Main deck salon - bar





Main deck salon



Main deck salon - dining table



Main deck salon



Main deck salon





Main deck salon



Main deck salon



Main deck salon



Main deck salon



Master stateroom



Master stateroom



Master stateroom - ensuite



Master stateroom - ensuite





Master stateroom - study



Master stateroom



Master stateroom



Master stateroom



Double stateroom



Double stateroom



Double stateroom



Double stateroom ensuite





Double stateroom shower



Staircase on the main deck



Lower deck



Staircase



Upper deck salon



Upper deck salon



Upper deck salon



Upper deck salon





Upper deck salon - bar



Upper deck salon - dining



Upper deck salon - dining



Sun deck bar



Upper deck aft



Upper deck aft





Sun deck jacuzzi



Sun deck



Sun deck



Sun deck



Swimming platform and toys





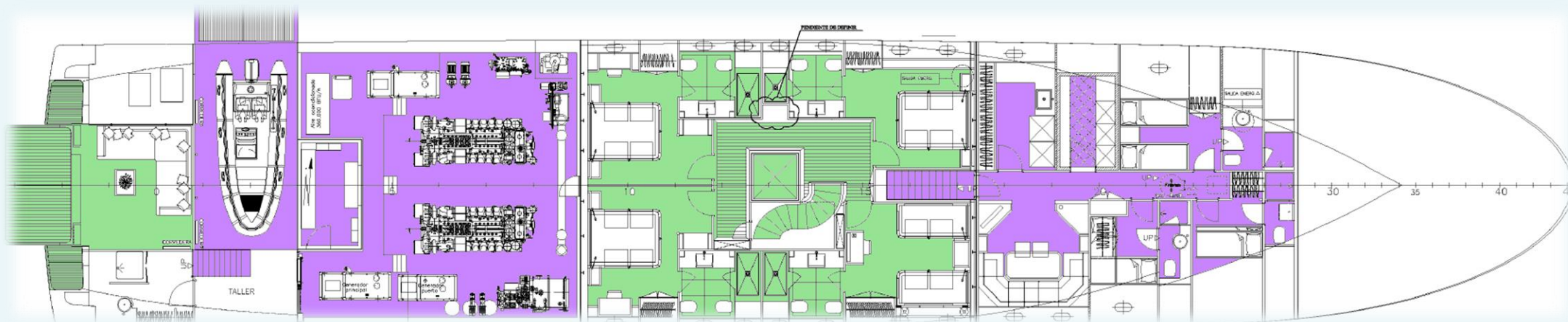
GUEST AREA



CREW AREA



## Lower Deck



## Main Deck



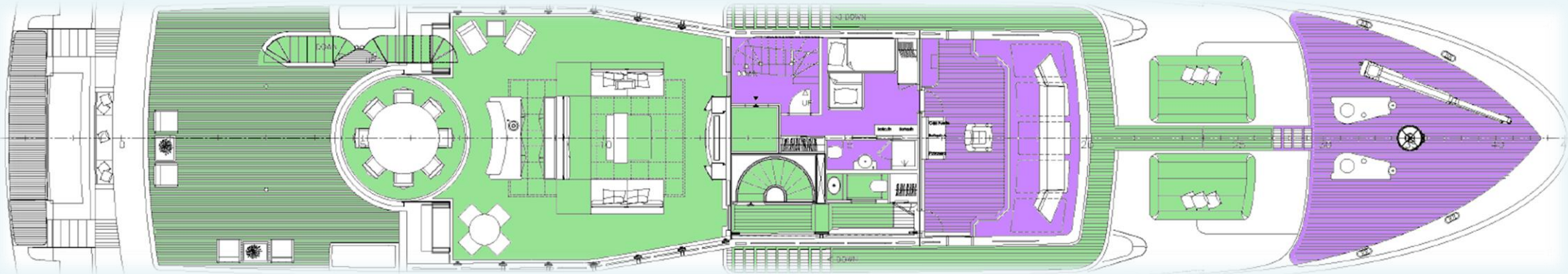
GUEST AREA



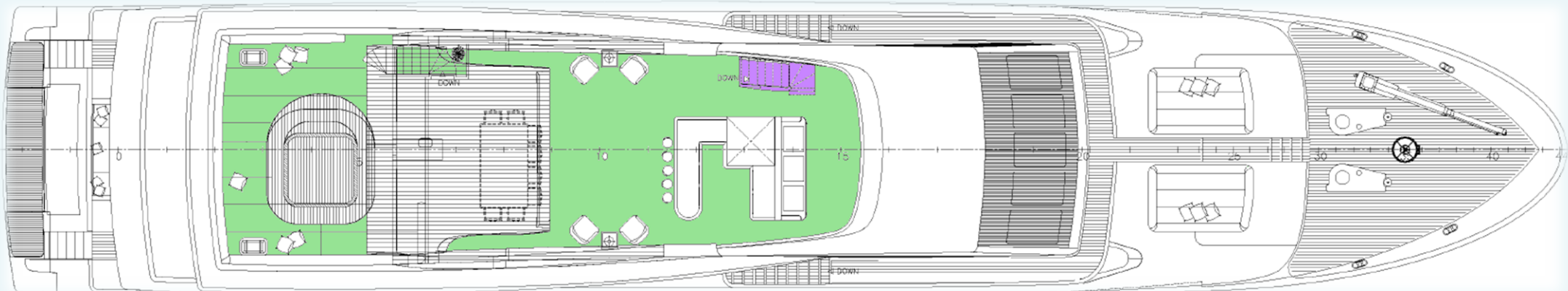
CREW AREA



## Bridge Deck



## Sun Deck





# SPECIFICATIONS

## WATERSPORTS

### Tender:

1x 4.9 metre Castoldi 8 person Jet Tender with a Yanmar 110hp inboard engine.

### Personal Water Craft:

1x Seadoo RXP-X260 jet ski 260hp GTX.

1x Seadoo GTX 260.

### Water sport toys & equipment:

3x Syfly e-foils.

4x Robosea Seaflyer Sea Scooters.

1x Inflatable towable doughnut

1x Freefall climbing wall.

2x Paddle boards

4x Kayaks.

1x set of water ski's

4x Fishing rods.

Snorkelling equipment.

## EQUIPMENT

### Engines: Main engines & Generators:

2 x MTU 16V 4000M61R 1520kW 2 x Kohler 80 kW 1 x Kohler 35 kW

### Cruising Speed:

12 knots

### Fuel Consumption:

150 Litres/Hr

## ACCOMMODATION

**Number of guests:** 10

**Number of cabins:** 5

### Cabin configuration:

4 Double Cabins, 1 Twin Cabins

### Bed configuration:

2 King Beds, 2 Queen Beds, 2 Single Beds